

COMPANY PROFILE

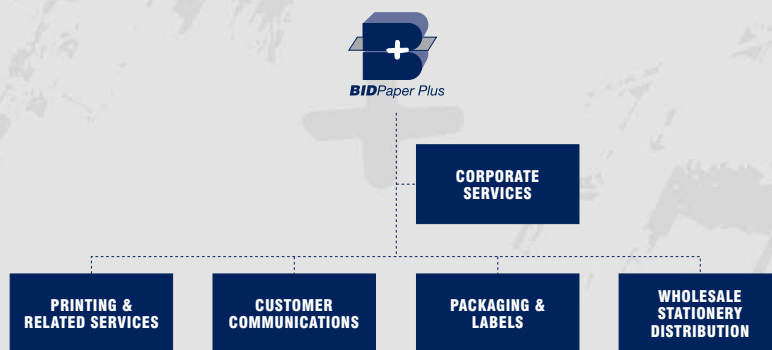




COMPANY PROFILE

+ ABOUT US

Bidpaper Plus (BPP) is one of Bidvest’s mainstream divisions. Created from companies that were previously part of other Bidvest divisional structures, BPP has since made a number of strategic acquisitions that positions it as a leading supplier of printing, packaging, and stationery solutions in southern Africa. The company is structured into four distinct, complementary sectors:



BPP follows Bidvest’s successful philosophy of de-centralised management, with each organisation having its own dedicated management team, with support from Corporate Services – finance, marketing, human resources and information technology.

Bidpaper Plus believes strongly that Black Economic Empowerment is an imperative for socio-economic growth and transformation. BEE therefore forms an integral component of our businesses and, in line with Bidvest’s approach, each company implements strategy, formulates their own plans, and undertakes specific initiatives.

Our Executive Management team is active in training and educating all management on transformation and practical implementation issues. While BPP actively works towards improving those areas of BEE good practice in which it is able to make a direct contribution, as it is a wholly-owned subsidiary, some codes are shared with Bidvest.

Bidpaper Plus currently holds a **Level Four Contributor** rating. For more detailed information, please refer to our “Our Empowerment” leaflet.



+ OUR PRODUCTS & SERVICES

PRINTING & RELATED SERVICES



BUSINESS FORMS

- Computer forms
- Eyeline & listing paper
- Books, pads & sets
- Wage/salary envelopes & advices
- Pre-set accounting & payroll forms
- Bar-coded forms
- Cheques & security documents
- Laser reels
- One-piece mailers
- Integrated labels
- Integrated membership cards
- Thermal paper rolls
- Point-of-sale rolls
- ATM rolls
- Pressure Seal forms & equipment
- Forms design & DTP



COMMERCIAL PRINT

- General printing
- Envelopes
- Photo wallets
- Event tickets
- Digital publishing
- Computer media
- Rubber stamps



FULFILMENT SERVICES

- Procurement
- Warehousing
- Picking & packaging
- Distribution



DOCUMENT & DATA MANAGEMENT

- Digital writing solutions
- Online business card system
- Software development
- Print & forms management
- Electoral document & material supplies & logistics
- Document scanning, archival & retrieval

CUSTOMER COMMUNICATIONS



- Direct mail
- Transactional mail (bills/statements)
- Data processing & laser printing
- Plastic cards
- Mailroom enclosing
- Component procurement
- Electronic document delivery
- Document archival & retrieval
- Full-colour digital printing

PACKAGING & LABEL PRODUCTS



PACKAGING PRODUCTS

- Paper bags
- Wrappers
- Serviettes



LABELS & LABELLING SYSTEMS

- Continuous computer labels
- Laser labels
- Product identification labels
- Bar-coded labels
- Thermal & thermal transfer labels
- Price-marking labels & equipment
- Bar-code printers & scanners
- Tagging systems
- Self-adhesive substrates

STATIONERY DISTRIBUTION



- General office supplies & stationery
- Envelopes & mailing products
- Files, folders & storage accessories
- Graphic & technical drawing supplies
- Office machines & calculators
- Scholastic stationery



COMPANY PROFILE

+ PRINTING & RELATED SERVICES DIVISION

A long and proud tradition of excellence in the manufacture of business forms is behind this core division. Comprising strategically-located production units that supply products through a national sales organisation, it has – as a result of acquisitions and organic growth – evolved to supplying a host of other print-complementary products and services. Today its comprehensive product range is unequalled in southern Africa.



Lithotech's product range comprises printed products – from business forms to recharge vouchers – that are distributed throughout South Africa from an integrated, national warehousing footprint.

A specialist business unit provides innovative electronic solutions that work harmoniously alongside traditional paper systems to enhance productivity and reduce 'printing' costs



Blesston Printing produces a wide range of top-quality commercial print products, ranging from letterheads to brochures and point-of-sale material.



Globe Stationery Manufacturers produces a wide range of commercial print products – from letterheads and brochures to the over-printing of envelopes.



Silveray Manufacturing produces scholastic and office stationery for a variety of leading national and international brands. Polypropylene film, for the manufacturing of PVC products, is extruded in-house.



Ozalid manufactures self-adhesive substrates for the label converting market, and also sources and supplies a wide range of drawing office equipment and supplies.



Kolok distributes label printers and scanners for bar coding and other applications, supporting customers with machine servicing and repair, software sales and support, and a comprehensive range of consumables.



+ CUSTOMER COMMUNICATIONS DIVISION

Effective communication with customers is the cornerstone of a successful business. Our Customer Communications division has been established with this vital objective in mind: to provide technologically-advanced mail outsourcing solutions for both paper-based and electronic mail formats – be they for direct mail, transactional mail, or informational applications.

Through innovative ideas, integrated information technology and intelligent system design, this division has the resources to cater to the market's every communication requirement. Currently, on behalf of South Africa's official tax authority, leading banks and financial institutions, major retailers, and many other organisations, our Customer Communications division produces and mails out millions of personalised customers communications each month – testament to the reliability, quality and professionalism of the service provided.



Lithotech Afric Mail is a specialist 'print-to-post' business that, utilising the latest digital printing technologies and mailing services, manufactures direct and transactional mail for business-to-business and business-to-consumer markets. Strategically-located productions units – in Cape Town, Johannesburg and Durban – provide a complementary service as well as a back-up resource for local disasters, ensuring vital communications are always mailed on time.



Utilising technologically-advanced digital printing devices, IDS offers clients a nationally-represented on-demand printing service that is ideally suited for the printing of small quantities of brochures, books, flyers, postcards, newsletters, catalogues and manuals.



Email Connection is a specialist in electronic document delivery – managing bulk email applications and offering secure electronic solutions that complement existing paper-based communications.

The core business application is electronic billing.



COMPANY PROFILE

+ PACKAGING & LABELS DIVISION

This division has been built on a broad skills and resources base that was developed initially to manufacture labels required for business process applications. From this solid foundation, the division has expanded its share of the label and packaging market through acquisitions, organic growth and technology enhancements.



Lithotech Labels specialises in the manufacture of labels and labelling systems used in a multitude of business process applications. Whether labels are required for desk-top devices that require A4 sheets, or for larger printers that require continuous stationery, Lithotech Labels is focussed on providing labelling solutions for every requirement. Their range of labelling solutions is enhanced with price-marking labels and application guns, thermal and thermal transfer labelling systems, as well as scale labels.



Rotolabel specialises in high-quality, rotary letterpress printing, hot foil stamping and rotary silk screening. The company supplies top-quality labels to leading retailers in the food, wine and hygiene industries, and enjoys a well-earned reputation for providing a committed and dedicated service to customers.

Using the latest digital printing technology, lower volumes of high quality labels can be supplied economically with a variety of specialist finishes. Film-based labels for flexible packaging applications can also be supplied with this technology.



Concentrating on their customers' packaging requirements, Lufil Packaging manufactures and distributes a broad range of printed paper bags, wraps and tissue products. While the manufacturing plant is based in Kwa-Zulu Natal, sales offices and warehouses are located throughout the country, ensuring the efficient delivery of time-critical products.



+ WHOLESALE STATIONERY DISTRIBUTION DIVISION

This division is focussed on the distribution of stationery items for leading international brands, as well as private brands that are either imported or manufactured from resources within Bidpaper Plus.

In order to maintain its leading position in the stationery industry, this division regularly carries out in-depth market research, here and overseas, in order to determine the latest market trends. Utilising an in-house team of designers and application specialists, school and office stationery products are either custom developed or acquired from cost-competitive sources.



Silveray Statmark Company, in its position as the South African agent for exclusive leading brands such as Croxley, Stabilo Boss, Dymo and many more, is the largest distributor of stationery and office products to the retail trade and office suppliers.

Paper-based stationery products are produced within the division's own production facility, while SSC's nationally-located branch network ensures stock availability and excellent local service.



Until its acquisition by The Bidvest Group in 2009, Pretoria Wholesale Stationers (PWS) was arguably the largest independent stationery wholesaler/distributor in southern Africa. With a listing of more than 8,500 product lines, PWS stocks and distributes all major brands of stationery – including Pentel, Pilot, Max Frank, Bantex, Files, Rexel, Croxley, and RBE, to name but a few.

PWS also imports its own products and has sole distribution rights on other brands of stationery, including Durable, Corb, Mighty Minds and Tecnocompass.

COMPANY PROFILE

+ CONTACT DETAILS

BUSINESS FORMS	Your nearest Lithotech sales office	0861 548468
COMMERCIAL PRINTING	Your nearest Lithotech sales office	0861 548468
FULFILMENT SERVICES	Your nearest Lithotech sales office	0861 548468
DOCUMENT & DATA MANAGEMENT	Lithotech Solutions Cape Lithotech Solutions Johannesburg	+27 (0)21 5074100 +27 (0)11 7066751
ELECTORAL DOCUMENT & MATERIAL SUPPLIES & LOGISTICS	electionsAfrica division of Lithotech Corporate	+27 (0)11 7066751
CUSTOMER COMMUNICATIONS	Lithotech Afric Mail Cape Lithotech Afric Mail Durban Lithotech Afric Mail Johannesburg	+27 (0)21 9353300 +27 (0)31 7927000 +27 (0)11 4741554
PRINT-ON-DEMAND (POD)	Imaging Data Systems (IDS)	+27 (0)21 9511400
ELECTRONIC DOCUMENT DELIVERY	Email Connection	+27 (0)11 7863116
PACKAGING PRODUCTS	Lufil: • Cape Town • Isithebe • Johannesburg	+27 (0)21 5517828 +27 (0)32 4592279 +27 (0)11 6263633
LABELS & LABELLING SYSTEMS	Your nearest Lithotech sales office	0861 548468
PRODUCT IDENTIFICATION LABELS	Rotolabel	+27 (0)21 5325540
SELF-ADHESIVE SUBSTRATES	Ozalid	+27 (0)11 9758141
STATIONERY DISTRIBUTION	Silveray Statmark Company: • Bloemfontein • Cape Town • Durban • East London • Johannesburg • Port Elizabeth Pretoria Wholesale Stationers: • Cape Town • Durban • Johannesburg • Pretoria	+27 (0)51 4474641 +27 (0)21 9365200 +27 (0)11 4622081 +27 (0)43 7228781 +27 (0)11 6770000 +27 (0)41 3918600 +27 (0)21 5279000 +27 (0)31 5791884 +27 (0)11 2260600 +27 (0)12 5231012
GRAPHIC & TECHNICAL DRAWING SUPPLIES	Ozalid	+27 (0)11 9758141
EXPORT ENQUIRIES	Lithotech Exports	+27 (0)11 7066751

